

PRKG Antibody
Rabbit Polyclonal Antibody
Catalog # ALS12904**Specification**

PRKG Antibody - Product Information

Application	WB, IHC-P
Primary Accession	Q13976
Reactivity	Human, Mouse, Rat, Pig
Host	Rabbit
Clonality	Polyclonal
Dilution	WB~~1:1000 IHC-P~~N/A

PRKG Antibody - Additional Information**Gene ID** 5592**Other Names**

cGMP-dependent protein kinase 1, cGK 1, cGK1, 2.7.11.12, cGMP-dependent protein kinase I, cGKI, PRKG1, PRKG1B, PRKGR1A, PRKGR1B

Reconstitution & Storage

Store at -20°C.

Precautions

PRKG Antibody is for research use only and not for use in diagnostic or therapeutic procedures.

PRKG Antibody - Protein Information**Name** PRKG1**Synonyms** PRKG1B, PRKGR1A, PRKGR1B**Function**

Serine/threonine protein kinase that acts as a key mediator of the nitric oxide (NO)/cGMP signaling pathway. GMP binding activates PRKG1, which phosphorylates serines and threonines on many cellular proteins. Numerous protein targets for PRKG1 phosphorylation are implicated in modulating cellular calcium, but the contribution of each of these targets may vary substantially among cell types. Proteins that are phosphorylated by PRKG1 regulate platelet activation and adhesion, smooth muscle contraction, cardiac function, gene expression, feedback of the NO-signaling pathway, and other processes involved in several aspects of the CNS like axon guidance, hippocampal and cerebellar learning, circadian rhythm and nociception. Smooth muscle relaxation is mediated through lowering of intracellular free calcium, by desensitization of contractile proteins to calcium, and by decrease in the contractile state of smooth muscle or in platelet activation. Regulates intracellular calcium levels via several pathways: phosphorylates IRAG1 and inhibits IP3-induced Ca(2+) release from intracellular stores, phosphorylation of KCNMA1 (BKCa) channels decreases intracellular Ca(2+) levels, which leads to increased opening

of this channel. PRKG1 phosphorylates the canonical transient receptor potential channel (TRPC) family which inactivates the associated inward calcium current. Another mode of action of NO/cGMP/PKG1 signaling involves PKGI-mediated inactivation of the Ras homolog gene family member A (RhoA). Phosphorylation of RHOA by PRKG1 blocks the action of this protein in myriad processes: regulation of RHOA translocation; decreasing contraction; controlling vesicle trafficking, reduction of myosin light chain phosphorylation resulting in vasorelaxation. Activation of PRKG1 by NO signaling also alters gene expression in a number of tissues. In smooth muscle cells, increased cGMP and PRKG1 activity influence expression of smooth muscle-specific contractile proteins, levels of proteins in the NO/cGMP signaling pathway, down- regulation of the matrix proteins osteopontin and thrombospondin-1 to limit smooth muscle cell migration and phenotype. Regulates vasodilator-stimulated phosphoprotein (VASP) functions in platelets and smooth muscle.

Cellular Location

Cytoplasm. Note=Colocalized with TRPC7 in the plasma membrane.

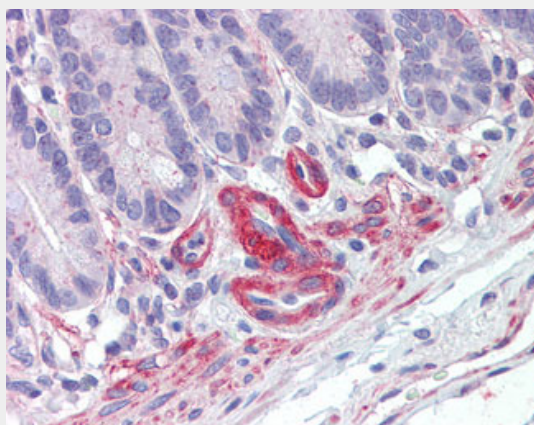
Tissue Location

Primarily expressed in lung and placenta.

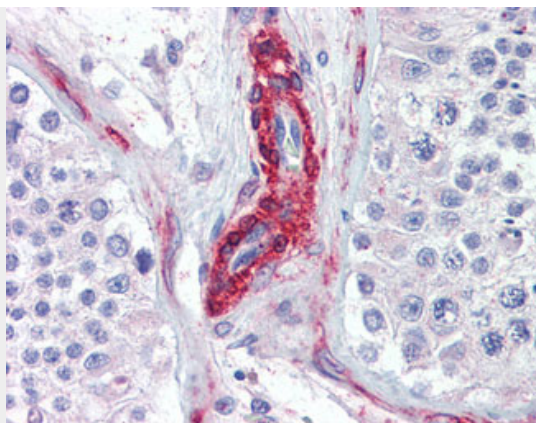
PRKG Antibody - Protocols

Provided below are standard protocols that you may find useful for product applications.

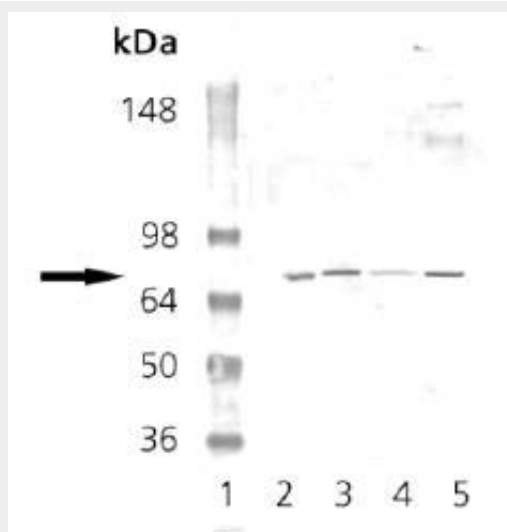
- [Western Blot](#)
- [Blocking Peptides](#)
- [Dot Blot](#)
- [Immunohistochemistry](#)
- [Immunofluorescence](#)
- [Immunoprecipitation](#)
- [Flow Cytometry](#)
- [Cell Culture](#)

PRKG Antibody - Images

Anti-PRKG / cGMP-Dependent Protein Kinase antibody IHC of human small intestine.



Anti-PRKG / cGMP-Dependent Protein Kinase antibody IHC of human testis.



Western Blot Analysis: Lane 1: MWM, Lane 2: Mouse Brain Tissue Extract, Lane 3: Rat Brain Tissue...